

The good life awaits.

There's a good reason our residents say they wish they had moved in earlier. That's because Aviva Communities isn't a retirement village - it's a luxury lifestyle resort - where you can do as much or as little as you want, whenever you want!

Why choose a home, when you can choose a lifestyle? Whether you dream of golf, travel, writing that novel, making new friends or mastering soufflé-making, Aviva Communities lets you live the life you've dreamed of.

Retirement should be about living without compromise! Join the community where luxury meets lifestyle.

**BEST IN VALUE.
BEST IN LIFESTYLE.**



The Brentwood X

2 BED | 2 TOILETS | 1 BATHROOM | 1 CAR

Let there be light over spacious living zones



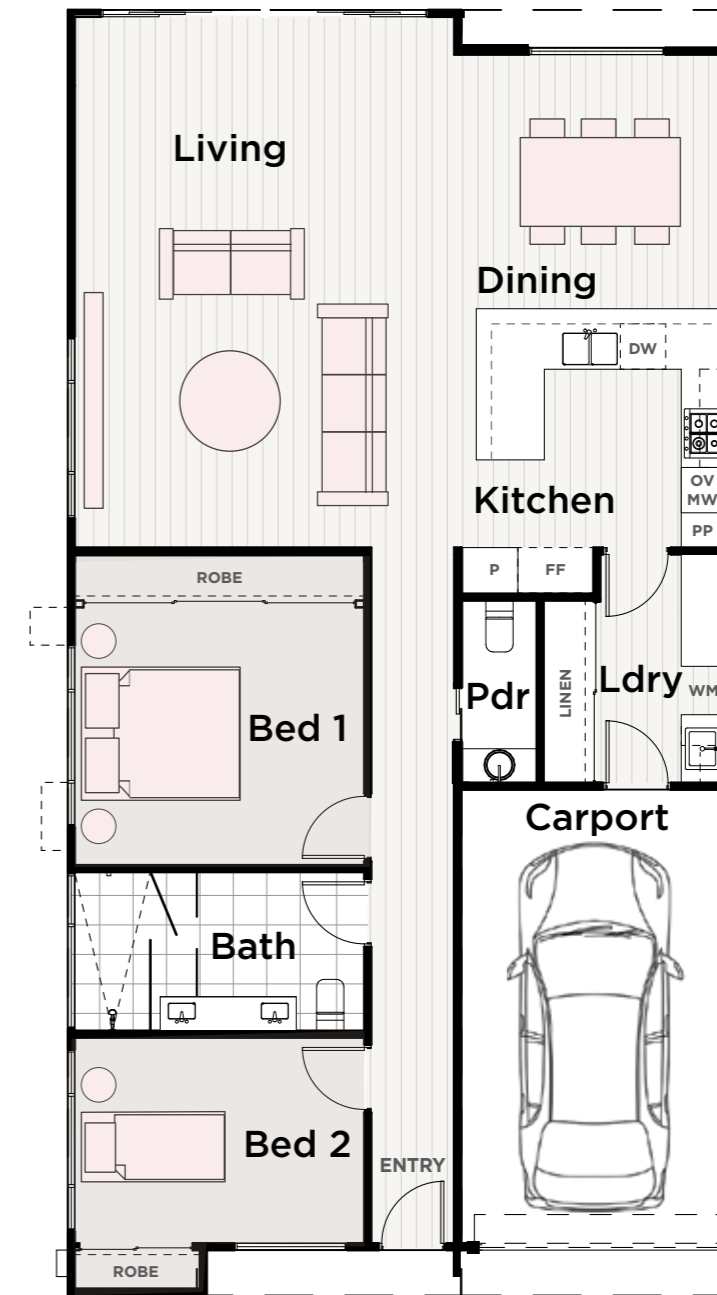
CONTACT ANDREW ON 0455 245 438 OR
ANDREW@AVIVACOMMUNITIES.COM.AU

[Avivacommunities.com.au](https://www.avivacommunities.com.au)



Illustrations are intended to be a visual guide only and may vary from the actual home. Drawings not to scale and subject to change without notice. All details are correct at the time of publication. Please refer to your site specific working drawings for final measurements and home details. © 2020 Aviva Communities Limited.

*Your best retirement lifestyle
is at Aviva Communities*



INCLUSIONS

- Fully equipped kitchen with high quality appliances including cooktop, wall oven, rangehood, dishwasher, microwave, 20mm stone benchtops and overhead cupboards
- Open plan living with north facing aspect providing year round sunshine
- Access to the rear yard through bi-parting sliding doors
- Built in robes to bedrooms with hanging rails, shelving and drawer towers
- Separate powder room
- 100% wool carpet, tiles and hybrid flooring
- Downlights throughout
- Bathroom with double vanity basin and stone benchtops
- Large laundry with pullout clothes hamper and soft close drawers
- Ducted heating and cooling
- Window furnishings
- Clothesline
- Landscaping
- Privacy screening
- Single carport with automatic sectional door

The Brentwood X

2 BED | 2 TOILETS | 1 BATHROOM | 1 CAR

LIVING AREA	111.30 m ²
CARPORT	21.90 m ²
VERANDAH	14.20 m ²
TOTAL	147.40 m²