

## The good life awaits.

There's a good reason our residents say they wish they had moved in earlier. That's because Aviva Communities isn't a retirement village - it's a luxury lifestyle resort - where you can do as much or as little as you want, whenever you want!

Why choose a home, when you can choose a lifestyle? Whether you dream of golf, travel, writing that novel, making new friends or mastering soufflé-making, Aviva Communities lets you live the life you've dreamed of.

Retirement should be about living without compromise! Join the community where luxury meets lifestyle.

**BEST IN VALUE.  
BEST IN LIFESTYLE.**



## The Oregon

2 BED | 2 TOILET | 1 BATHROOM | 1 CAR

## Enjoy the feeling of beautiful living spaces



CONTACT ANDREW ON 0455 245 438 OR  
ANDREW@AVIVACOMMUNITIES.COM.AU



[Avivacommunities.com.au](http://Avivacommunities.com.au)



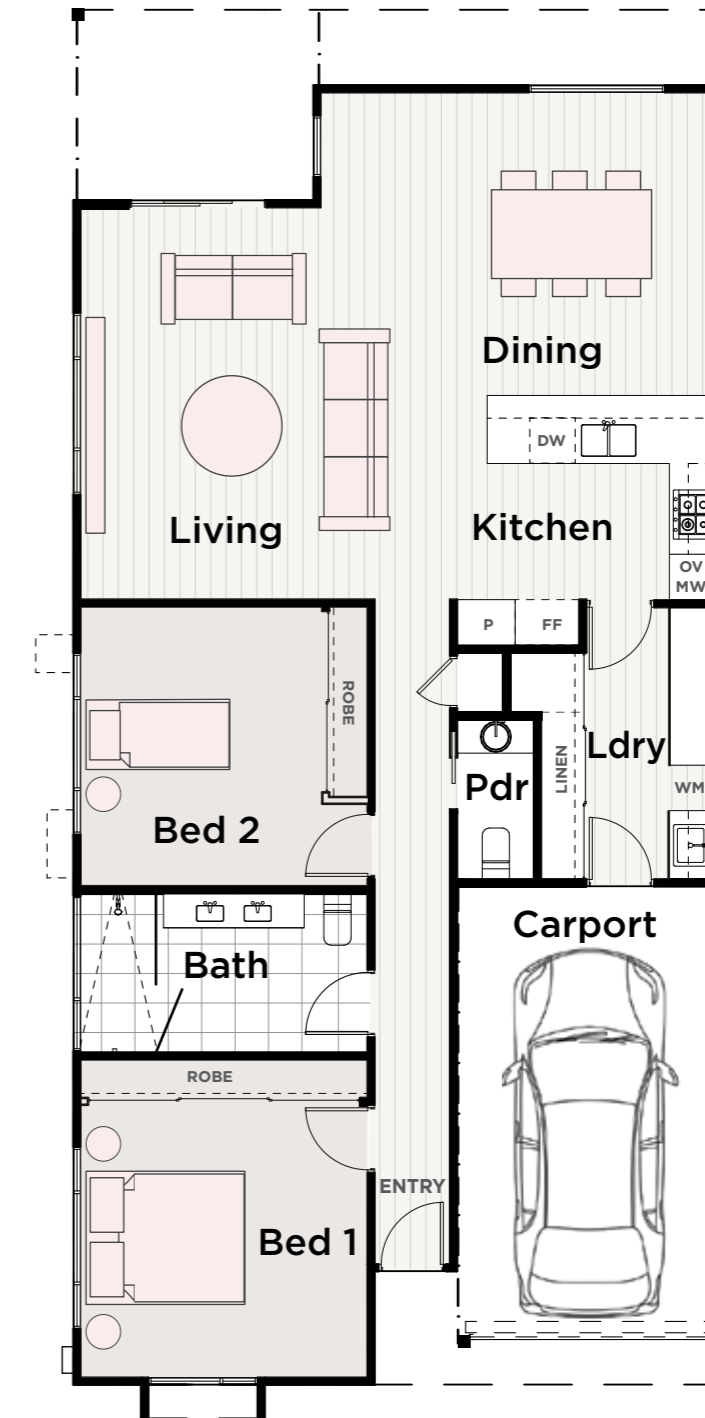
Illustrations are intended to be a visual guide only and may vary from the actual home. Drawings not to scale and subject to change without notice. All details are correct at the time of publication. Please refer to your site specific working drawings for final measurements and home details. © 2019 Aviva Communities Limited.

*Your best retirement lifestyle is at Aviva Communities*



## INCLUSIONS

- Fully equipped kitchen with high quality appliances including cooktop, wall oven, rangehood, dishwasher, microwave, 20mm stone benchtops and overhead cupboards
- Open plan living with northern facing aspect providing year round sunshine
- Access to the rear yard through bi-parting sliding doors
- Built in robes to bedrooms with hanging rails, shelving and drawer towers
- Separate powder room
- 100% wool carpet, tiles and engineered timber flooring
- Bathroom with double vanity basin and stone benchtops
- Large laundry and pullout clothes hamper and soft close joinery
- Ducted heating and cooling
- Window furnishings
- Clothesline
- Landscaping
- Privacy screening
- Single carport with automatic sectional door



## The Oregon

2 BED | 2 TOILET | 1 BATHROOM | 1 CAR

|              |                             |
|--------------|-----------------------------|
| LIVING AREA  | 128.60 m <sup>2</sup>       |
| CARPORT      | 21.30 m <sup>2</sup>        |
| VERANDAH     | 10.40 m <sup>2</sup>        |
| <b>TOTAL</b> | <b>160.30 m<sup>2</sup></b> |